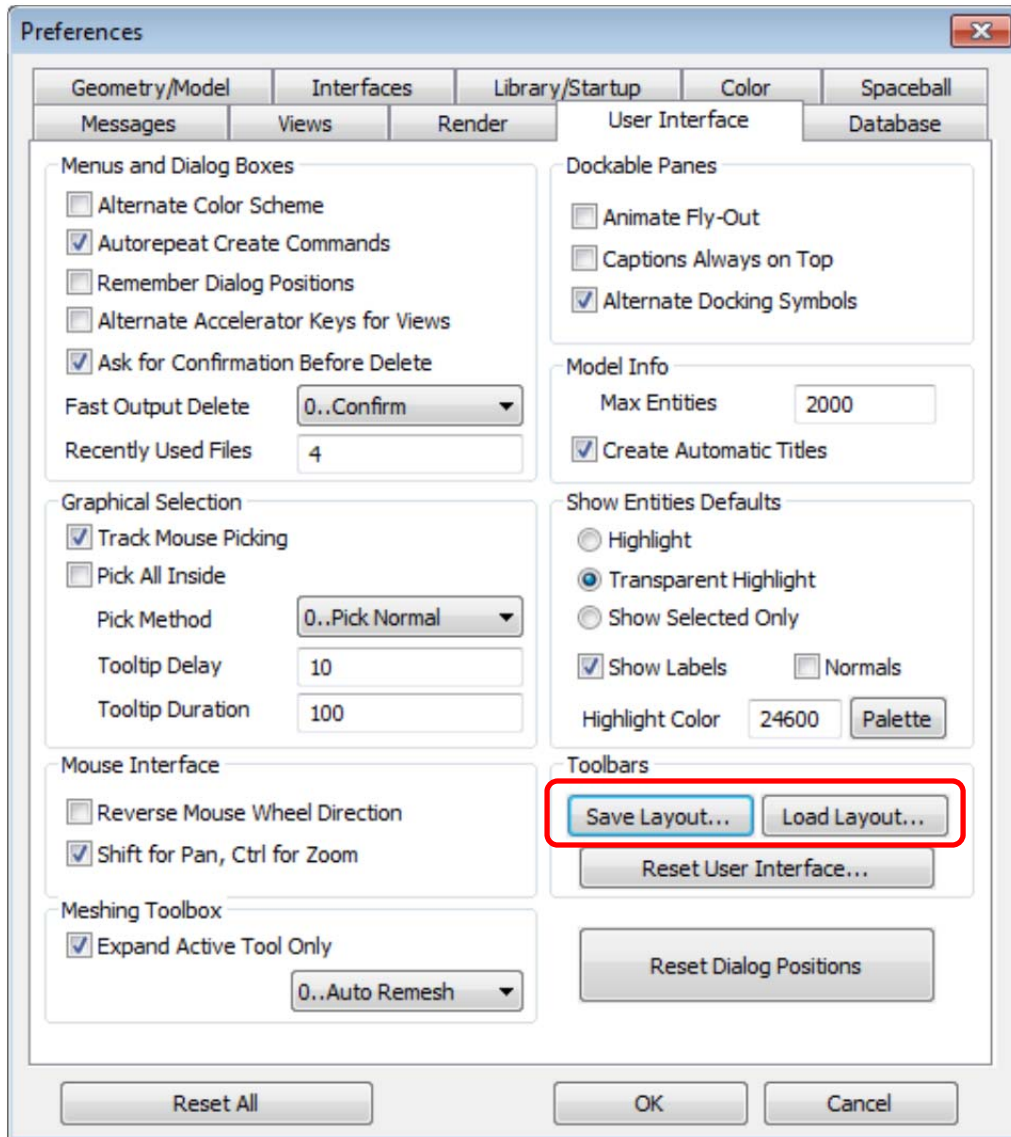


Femap Tip and Tricks: Layout and View

Once you have the Femap user interface set the way you like it, with the desired arrangement of windows, panes and view attributes, you can save both the layout and the view so that you can easily reset them should the need arise.

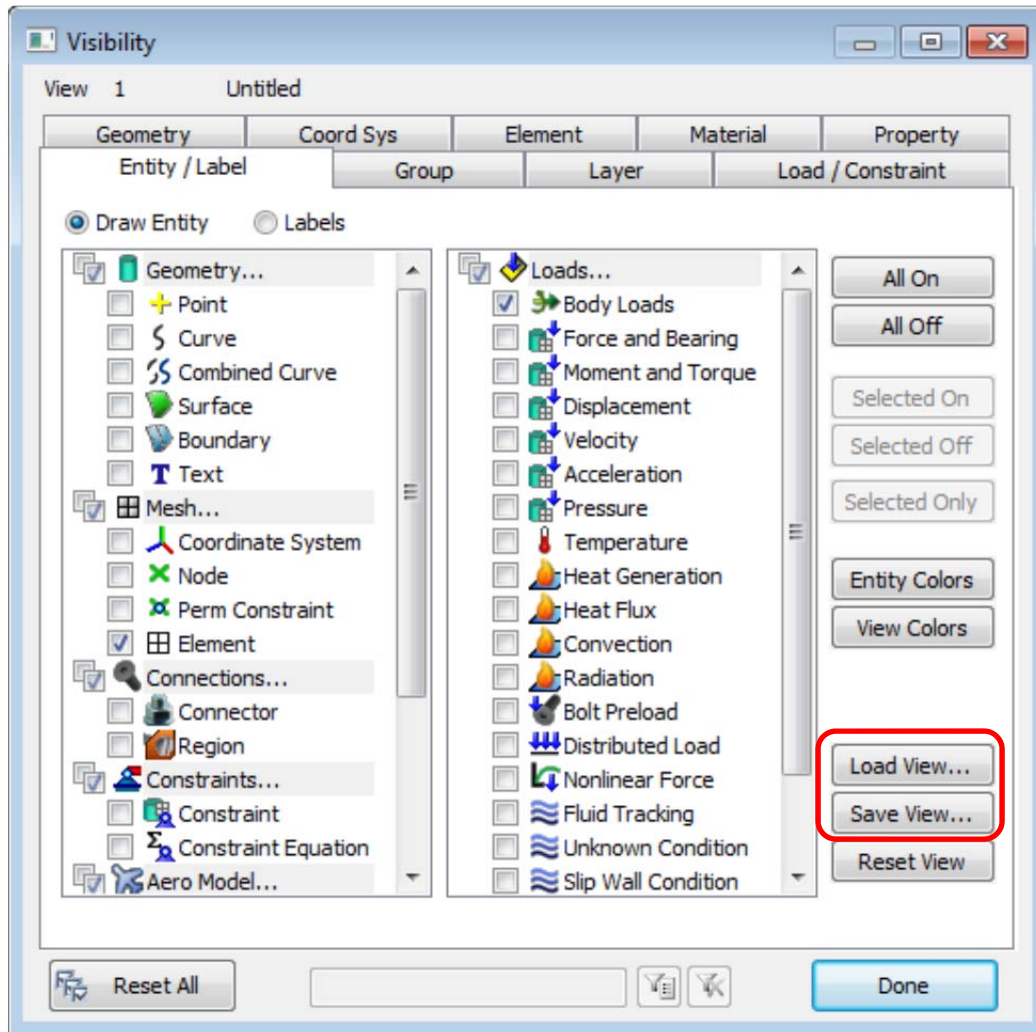
You can save the user interface layout by selecting **File | Preferences** in the menu, and then selecting the **User Interface** tab. In the Toolbars section of the *Preferences* dialog, click the **Save Layout** button and browse to the directory where you wish to save the layout file, and enter the desired filename.



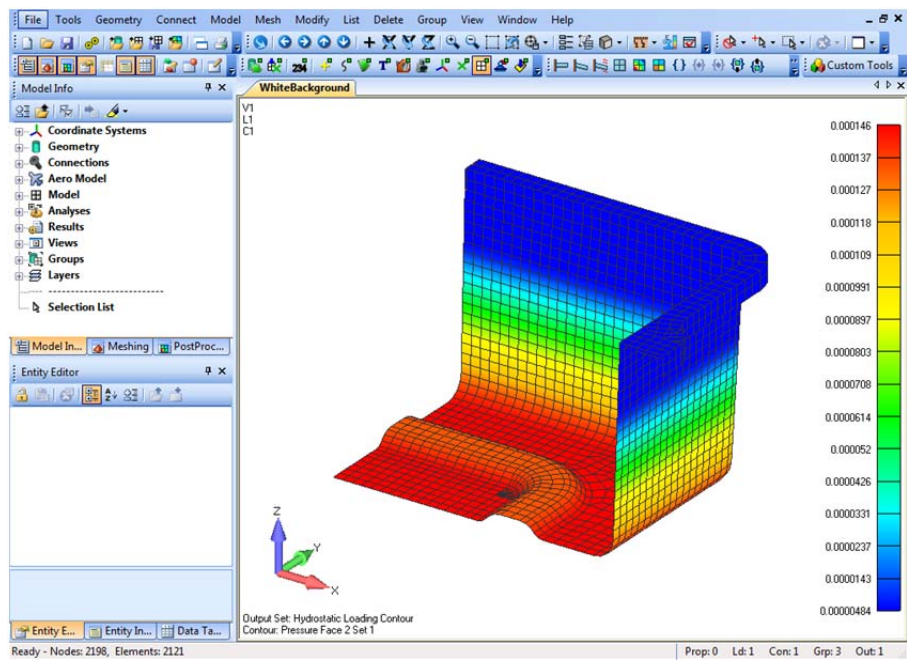
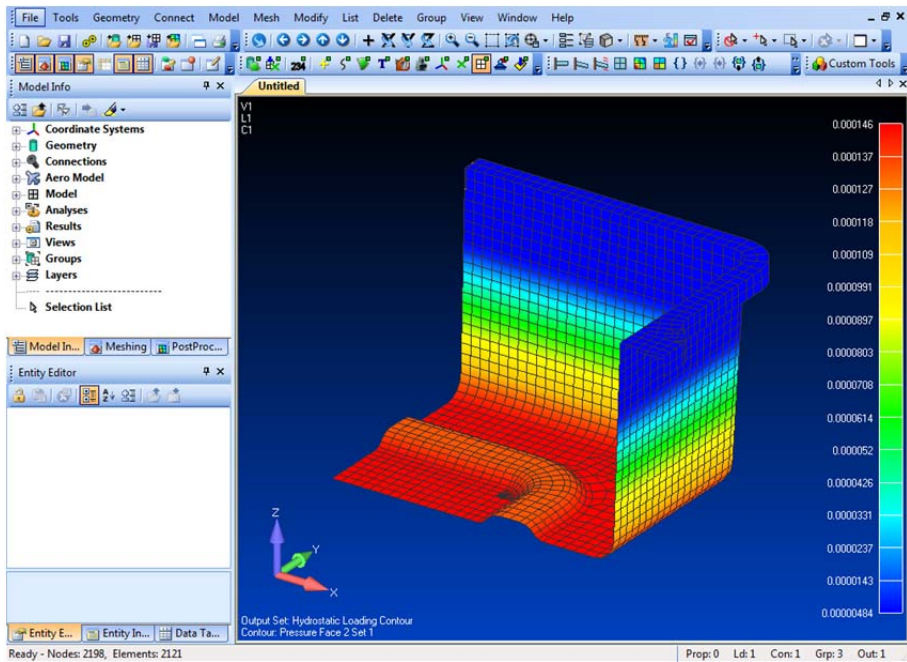
To retrieve a previously saved layout, click the **Load Layout** button and browse to the file location.

The model view with its attributes such as model orientation, contour type, background color etc. can also be saved. Views are saved in the View Library under the view name. To save a view, first rename

the view – the default view name is “untitled”. Select **View | Create/Manage...** in the menu. In the **View Manager** dialog click the **Update Title** button, and enter a view name in the resulting *Update Title* dialog. Now select **View | Visibility** in the menu to open the *View Visibility* dialog. In the **Entity / Label** tab you can save the renamed view by clicking the **Save View...** button. There is also a **Load View...** button to retrieve or change to another view.



It's possible to set up different views for different purposes, for example you can create a view with a white background for printing purposes. Saving and loading views in this way is a quick and easy way to swap between different views with differing view attributes.



Watch the video of this Femap tip on [YouTube](#).