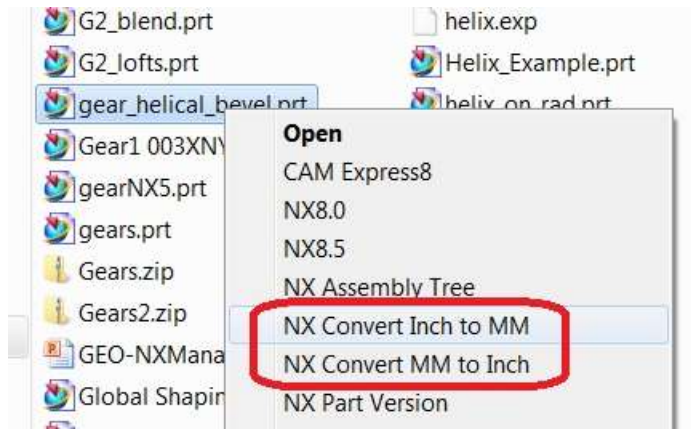


NX Units Conversion on Windows7

The process of converting units MM to Inch or Inch to MM on one or more NX part files can be as simple as right-clicking on .prt file icons in Windows Explorer and selecting the appropriate conversion.



Below is the content of two batch files to do the conversion using the latest installed version of NX:

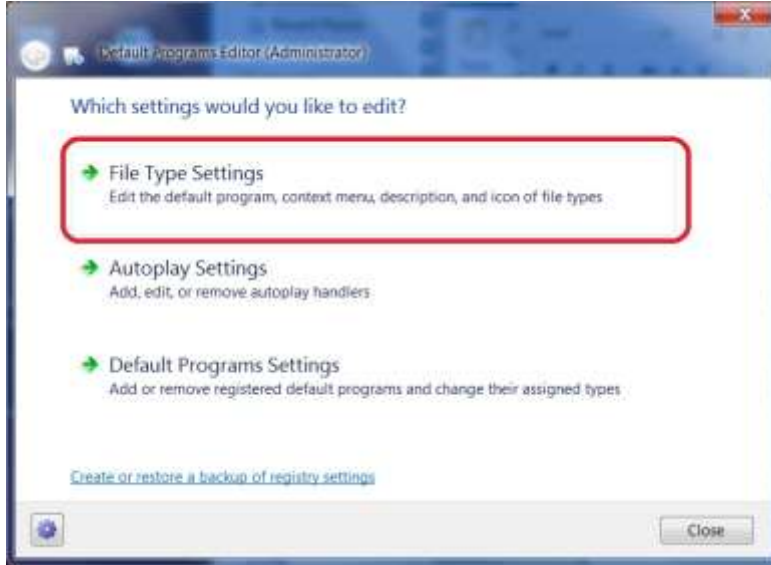
- NXconvertInch2MM.bat
@echo off
"%UGII_ROOT_DIR%\ug_convert_part.exe" -mm "%1"
pause
@echo on
- NXconvertMM2Inch.bat
@echo off
"%UGII_ROOT_DIR%\ug_convert_part.exe" -in "%1"
pause
@echo on

Download the free utility called Default Programs Editor to add the above pop-up items to the right mouse button (RMB):

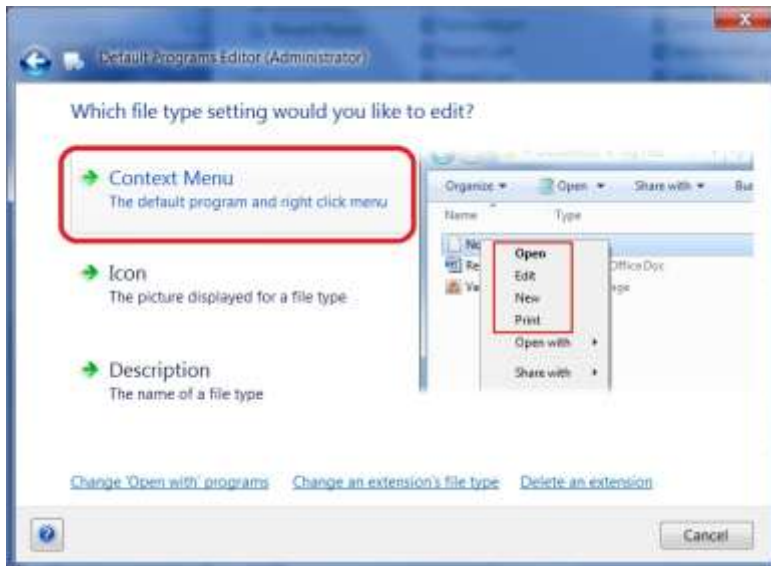
www.defaultprogramseditor.com

Here are the steps to add the items:

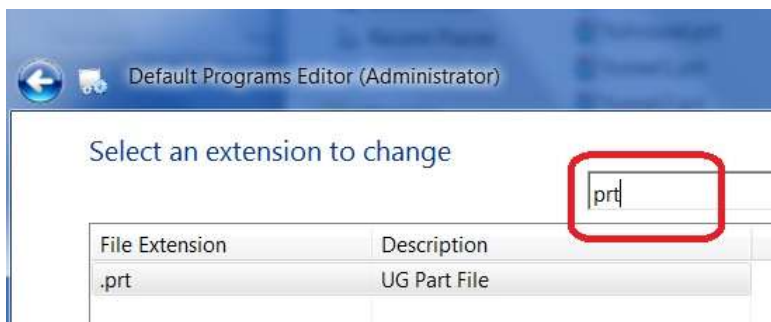
1. Place the batch files in a permanent folder location
2. Run Default Programs Editor and select File Type Settings



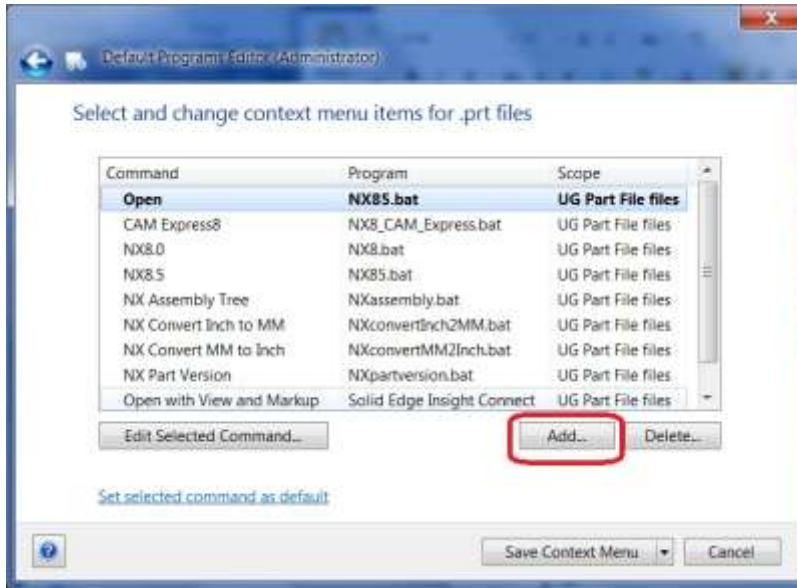
3. Select Context Menu



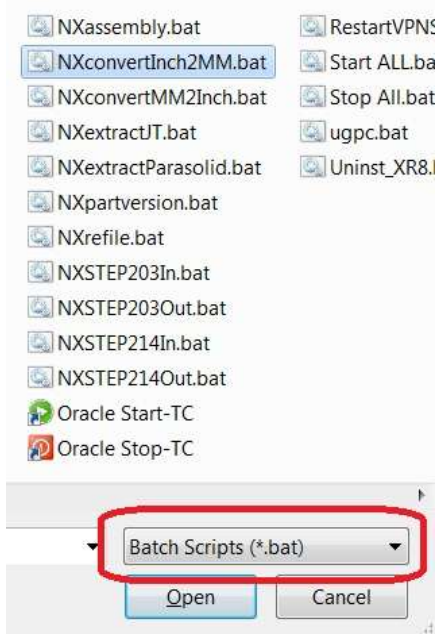
4. Key in prt for the extension and select Next



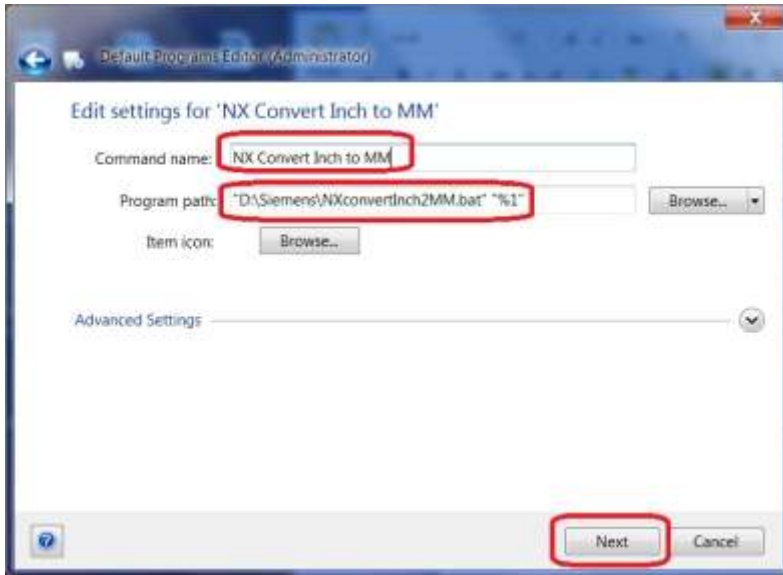
5. Press Add...



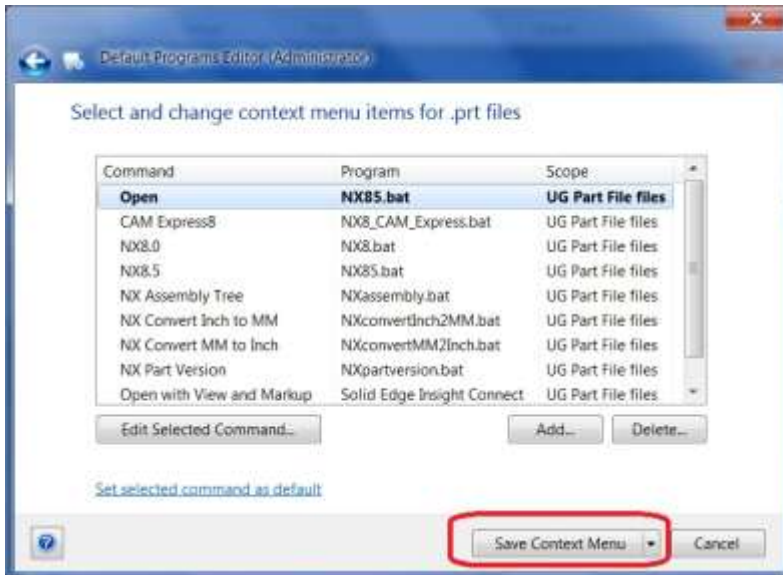
6. Press Browse, set filter to Batch Scripts, select one of the batch files from above, press Open



7. Key in the menu drop-down text for Command name, press Next



8. Press Save Context Menu, OK, Close



If you have questions or comments contact:

Rob Cohon
Siemens PLM Software
952-484-8761
rob.cohon@siemens.com