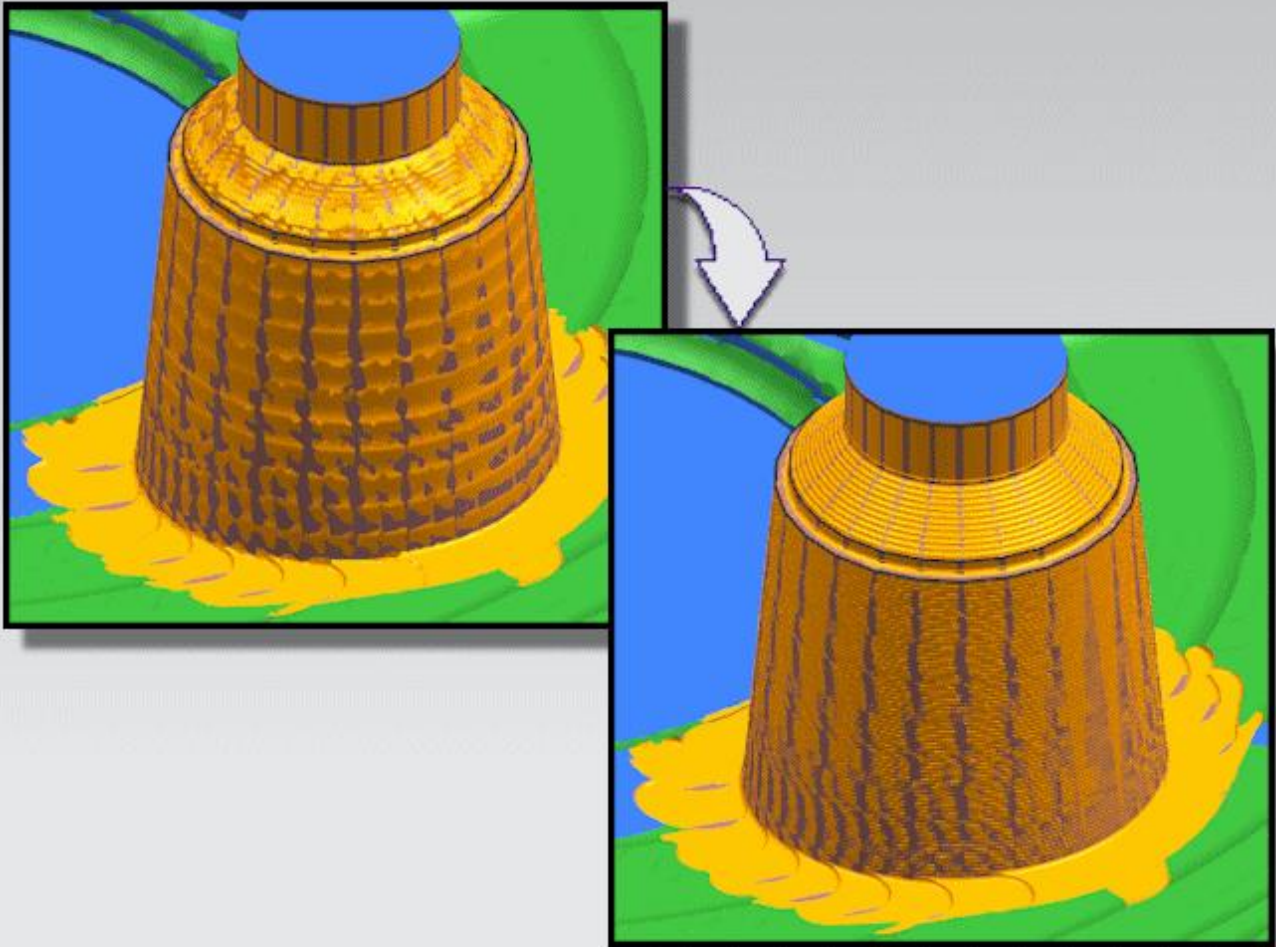


SIEMENS



Siemens PLM Software

# NX CAM 11.0.2: Enhanced IPW Resolution

Increasing the IPW resolution to clearly visualize the IPW.

Unrestricted

Answers for industry.

## **About NX CAM**

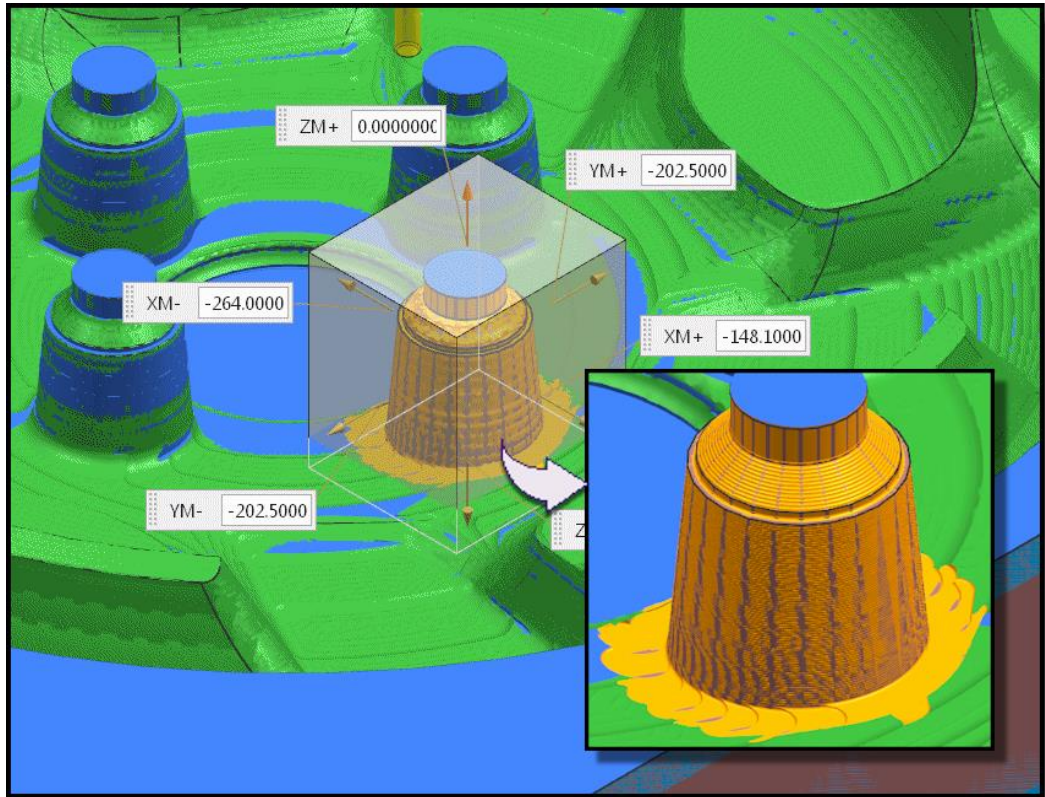
NX™ CAM software has helped many of the world's leading manufacturers and job shops produce better parts faster. You can also achieve similar benefits by making use of the unique advantages NX CAM offers.

This is one of many hands-on demonstrations designed to introduce you to the powerful capabilities in NX CAM 11.0.2. In order to run this demonstration, you will need access to NX CAM 11.0.2.

Visit the [NX Manufacturing Forum](#) to learn more, ask questions, and share comments about NX CAM.

## Hands-on Demonstration: Enhanced IPW Resolution

The new Enhance IPW Resolution function allows you to more clearly see the In-Process Workpiece within a specified volume when performing 3D tool path visualization.

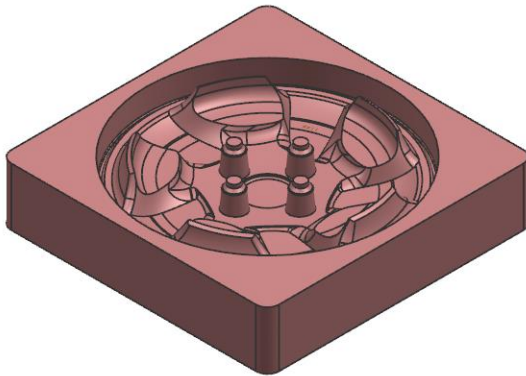


## Prerequisites:

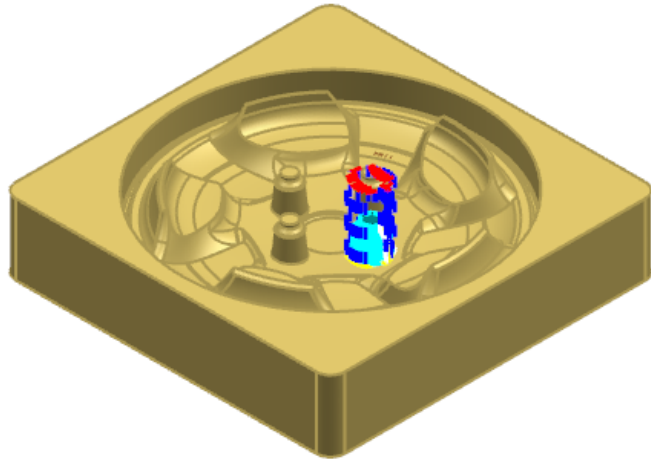
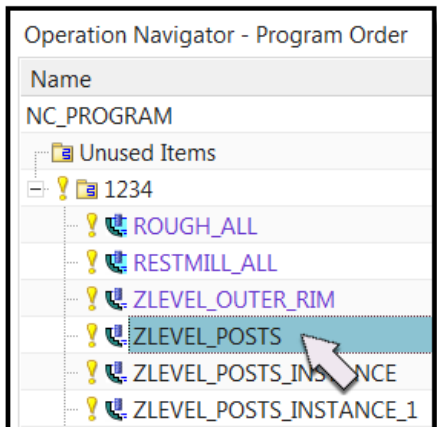
1. You will need access to **NX CAM 11.0.2** in order to run this demonstration.
2. If you haven't done so already, download and unzip **enhanced\_ipw\_resolution.7z**.


## Demo:

1. Open **enhanced\_ipw\_resolution.prt** in NX.

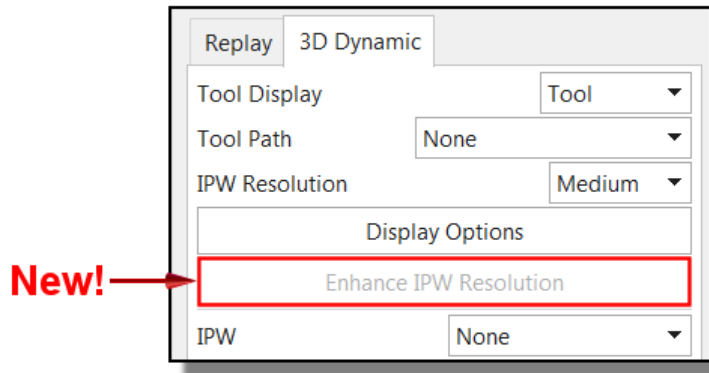


2. In the Program Order View of the Operation Navigator, select **ZLEVEL\_POSTS**.




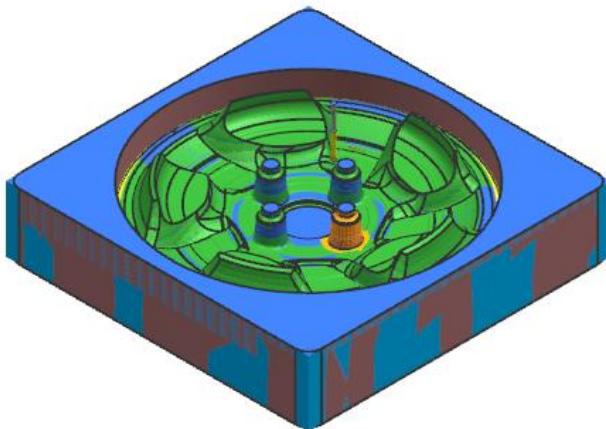
3. Select **Verify Tool Path**  in the Ribbon Bar.
4. Select the **3D Dynamic** tab.

The **Enhance IPW Resolution** option is new.

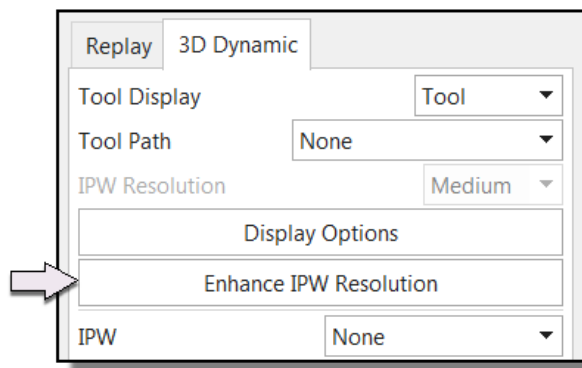


This button is available when the tool path visualization has been stopped or once the visualization has finished. It is not available before the visualization begins playing or while it is playing.

5. Click **Play** .
6. Click **Update Now** if the IPW Update dialog box displays.

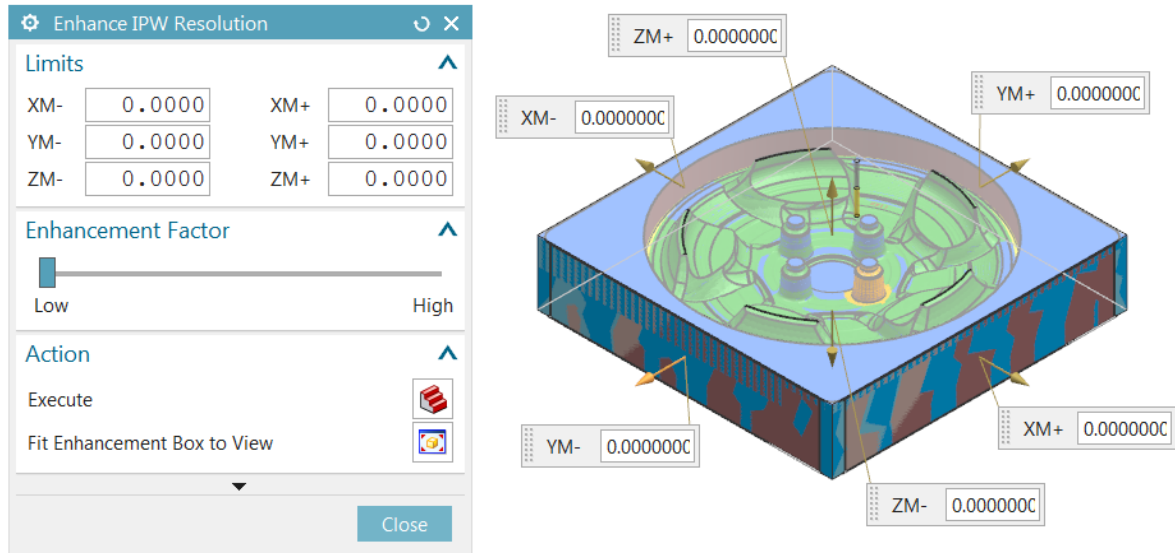


Notice that the **Enhance IPW Resolution** is now available.



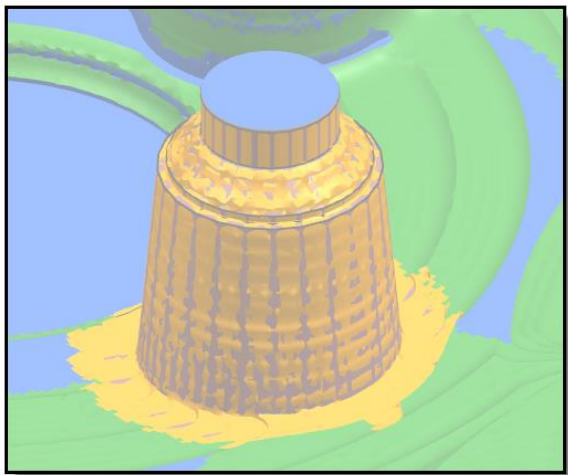
7. Click **Enhance IPW Resolution**.

The Enhance IPW Resolution dialog box allows you to increase the enhancement factor inside a specific volume to more clearly visualize the details of the IPW. Initially, the blank geometry is fully enclosed by the enhancement box.



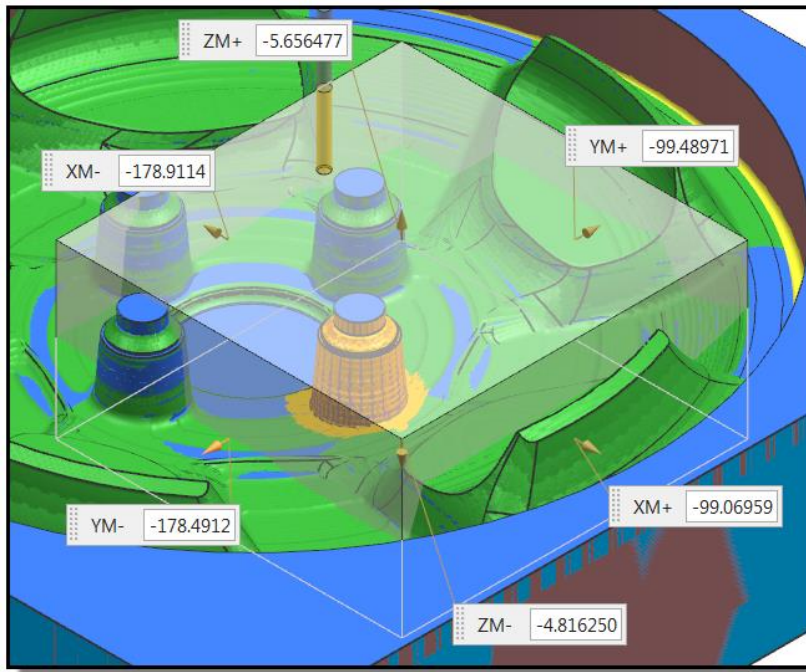
**Note:** If the blank geometry is not translucent as shown above, choose **Menu→Preferences→Visualization**, click the **Visual** tab, and select **Translucency**.

8. Zoom up on the area you wish to enhance.



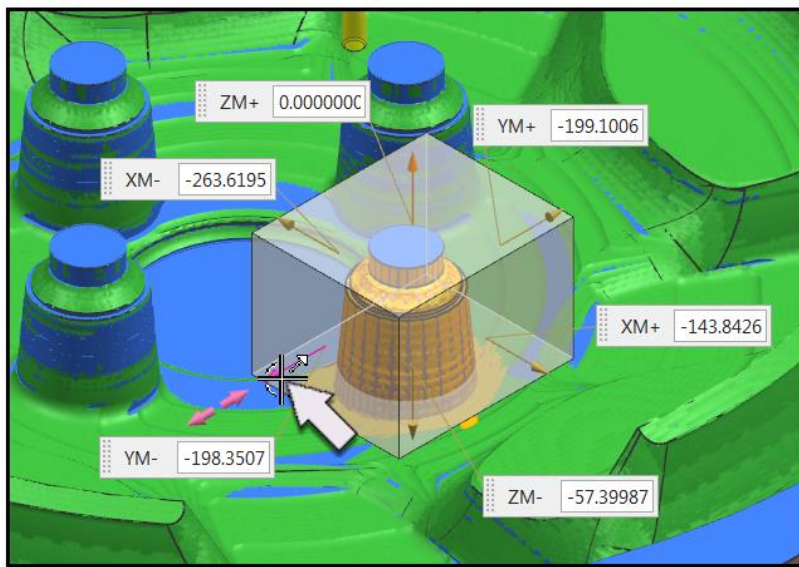
9. Click **Fit Enhancement Box to View** .

This trims the enhancement box volume down to the approximate size of the screen display.



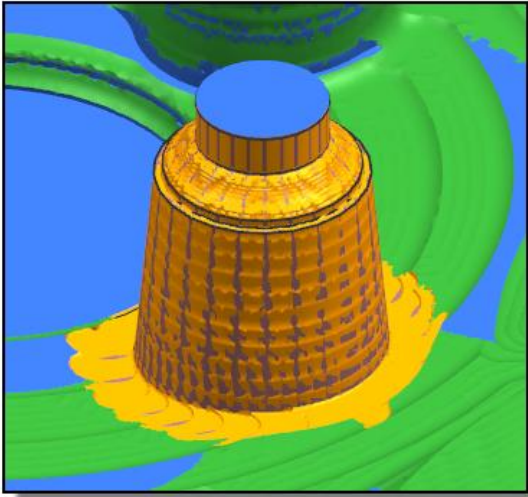
You can determine the exact size of the enhancement box by dragging the screen arrows.

10. Drag the arrows in the graphics window so that a single post is fully enclosed.

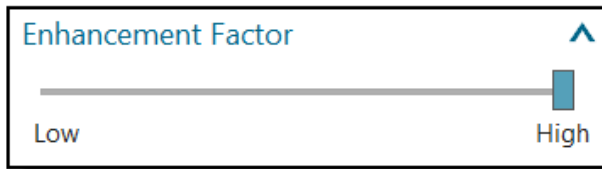


This is the volume to which the increased enhancement factor will apply.

11. Click **Execute** . Processing will take a moment.



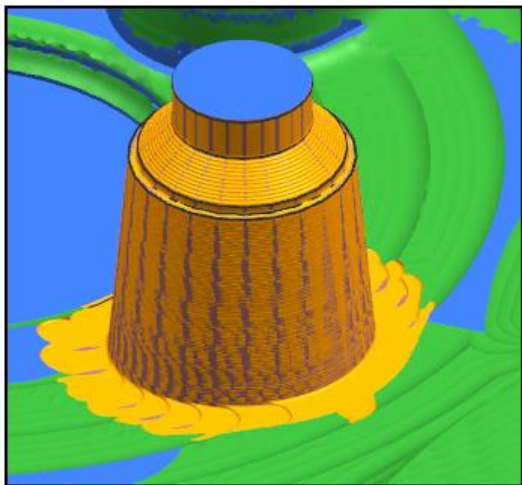
12. Increase the **Enhancement Factor**.



If the resolution is not satisfactory, increasing the Enhancement Factor and executing again allows you see the details of the IPW more clearly. The results are not saved with the IPW.

13. Click **Execute** . Processing will take a moment.

The increased resolution allows you see the details of the IPW more clearly.





14. Click **Close** to complete the enhanced resolution.
15. Click **Cancel** in the Tool Path Visualization dialog box.
16. Continue practicing on other areas of the part.
17. When you are finished, close the part without saving.

## Siemens Industry Software

### Headquarters

Granite Park One  
5800 Granite Parkway  
Suite 600  
Plano, TX 75024  
USA  
+1 972 987 3000

### Americas

Granite Park One  
5800 Granite Parkway  
Suite 600  
Plano, TX 75024  
USA  
+1 314 264 8499

### Europe

Stephenson House  
Sir William Siemens Square  
Frimley, Camberley  
Surrey, GU16 8QD  
+44 (0) 1276 413200

### Asia-Pacific

Suites 4301-4302, 43/F  
AIA Kowloon Tower, Landmark East  
100 How Ming Street  
Kwun Tong, Kowloon  
Hong Kong  
+852 2230 3308

### About Siemens PLM Software

Siemens PLM Software, a business unit of the Siemens Industry Automation Division, is a leading global provider of product lifecycle management (PLM) software and services with seven million licensed seats and more than 71,000 customers worldwide. Headquartered in Plano, Texas, Siemens PLM Software works collaboratively with companies to deliver open solutions that help them turn more ideas into successful products. For more information on Siemens PLM Software products and services, visit [www.siemens.com/plm](http://www.siemens.com/plm).

© 2017 Siemens Product Lifecycle Management Software Inc. Siemens and the Siemens logo are registered trademarks of Siemens AG. D-Cubed, Femap, Geolus, GO PLM, I-deas, Insight, JT, NX, Parasolid, Solid Edge, Teamcenter, Tecnomatix and Velocity Series are trademarks or registered trademarks of Siemens Product Lifecycle Management Software Inc. or its subsidiaries in the United States and in other countries. All other logos, trademarks, registered trademarks or service marks used herein are the property of their respective holders.

*Unrestricted*

[www.siemens.com/plm/nxmanufacturingforum](http://www.siemens.com/plm/nxmanufacturingforum)