



SIEMENS



Cory Goulden – Application Specialist

Survival Tips for the Foreign Data Mine Field

Solid Edge University 2014
May 12-14, Atlanta, GA, USA

Restricted © Siemens AG 2014

SOLID EDGE UNIVERSITY 2014
Re-imagine What's Possible

#SEU14

Agenda



- Who am I?
- What you will learn
- Importing subjects
- -ini files
- -imported files
- -template selection
- Tools
- -Assembly Relat'n Assistant
- -Relationship Assistant
- Export Options
- Q&A

Who am I

Cory Goulden



- Technical Trainer and Application Specialist for Designfusion.
- 14 years in manufacturing industry.
- 2 years with a reseller.
- A contributor to the Designfusion blog and active participant in the SE community over the years
- Beta tester for SE (as a customer).
- Presenter at SE events over the years

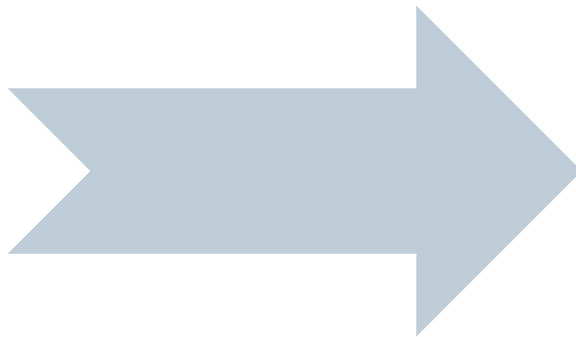
What you will learn

- Goal is to provide better clarity and understanding on some of the many options Solid Edge has for dealing with foreign data.
- Importing, tools, and exporting.
- All information will be provided based on first hand experience.
- Attempt to avoid follicle disruption through aggressive physical removal



Importing

- **File types Solid Edge can open**
- **Different options for each**



All Solid Edge documents (...)

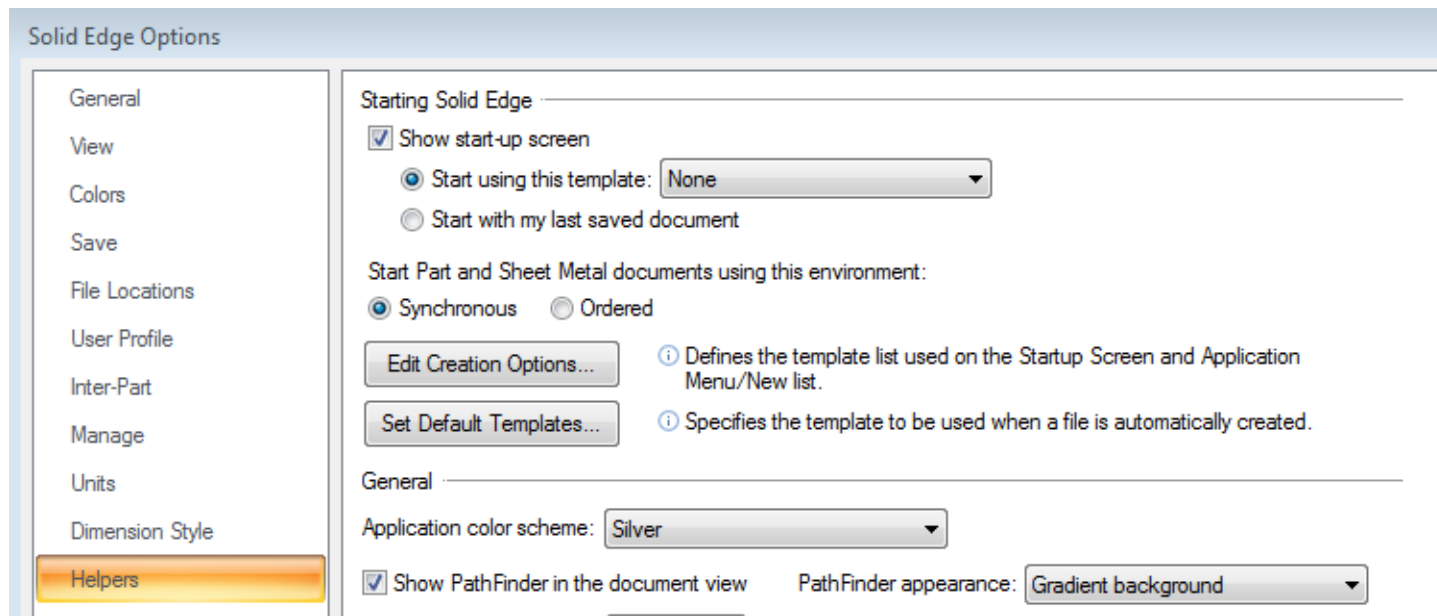
Assembly documents (*.asm)
 Draft documents (*.dft)
 Part documents (*.par)
 Sheet Metal documents (*.psm)
 Weldment documents (*.pwd)
 Parasolid documents (*.x_b;*.x_t)
 JT documents (*.jt)
 NX documents (*.prt)
 ACIS documents (*.sat)
 AutoCAD© documents (*.dwg)
 AutoCAD© documents (*.dxf)
 CATIA© V4 documents (*.model)
 CATIA© V5 Assembly documents (*.cat)
 CATIA© V5 Part documents (*.catpart)
 IGES documents (*.iges;*.igs)
 Inventor© Assembly documents (*.iam)
 Inventor© Part documents (*.ipt)
 MicroStation© documents (*.dgn)
 Pro/ENGINEER© Assembly documents (*.prt)
 Pro/ENGINEER© Part documents (*.prt)
 SDRC Package documents (*.xpk;*.plmx)
 SolidWorks© Assembly documents (*.sldasm)
 SolidWorks© Part documents (*.sldprt)
 STEP documents (*.step;*.stp)
 STL documents (*.stl)
 XML documents (*.plmxml)
 All documents (*.*)

Beware of Template Modification

Solid Edge>Options>Helpers

Be sure to set “Edit creation Options” if you modify the default template location. If an assembly file is translated into assy, SE will not know which template to use for the individual parts. Otherwise you will get surfaces instead of parts.

**** Not validated true on ST7**



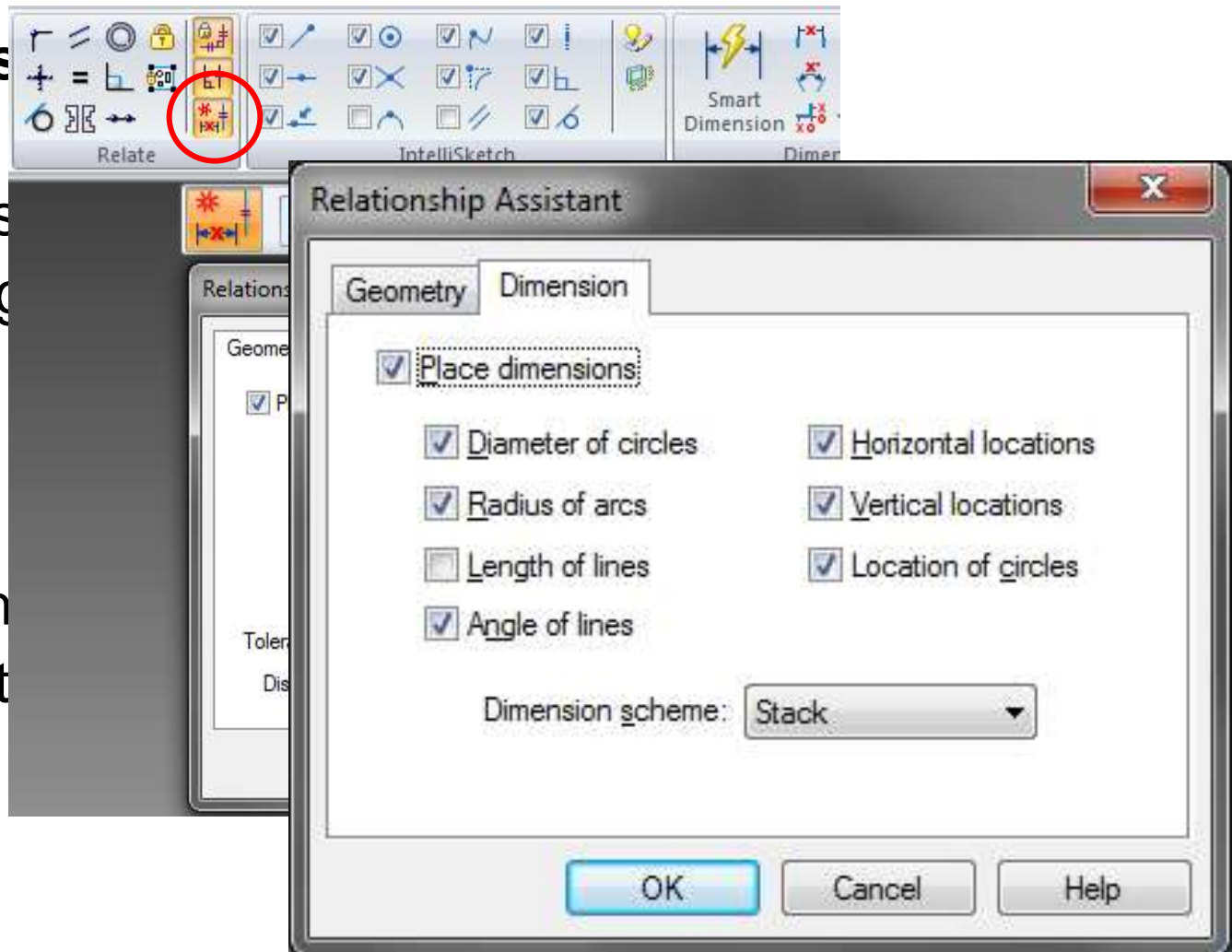
Ini Files

- Used to define any settings set in the options for the translation.
- Multiples can be used. (eg. Multiple SEACAD.ini files set for different vendors. Can select/change when importing.
- Some options not offered in “Options” can be set in the ini file if opened directly. USE AT YOUR OWN RISK. Always make a backup of original!

Some Tools for Additional Assistance (2D)

Geometry Ins

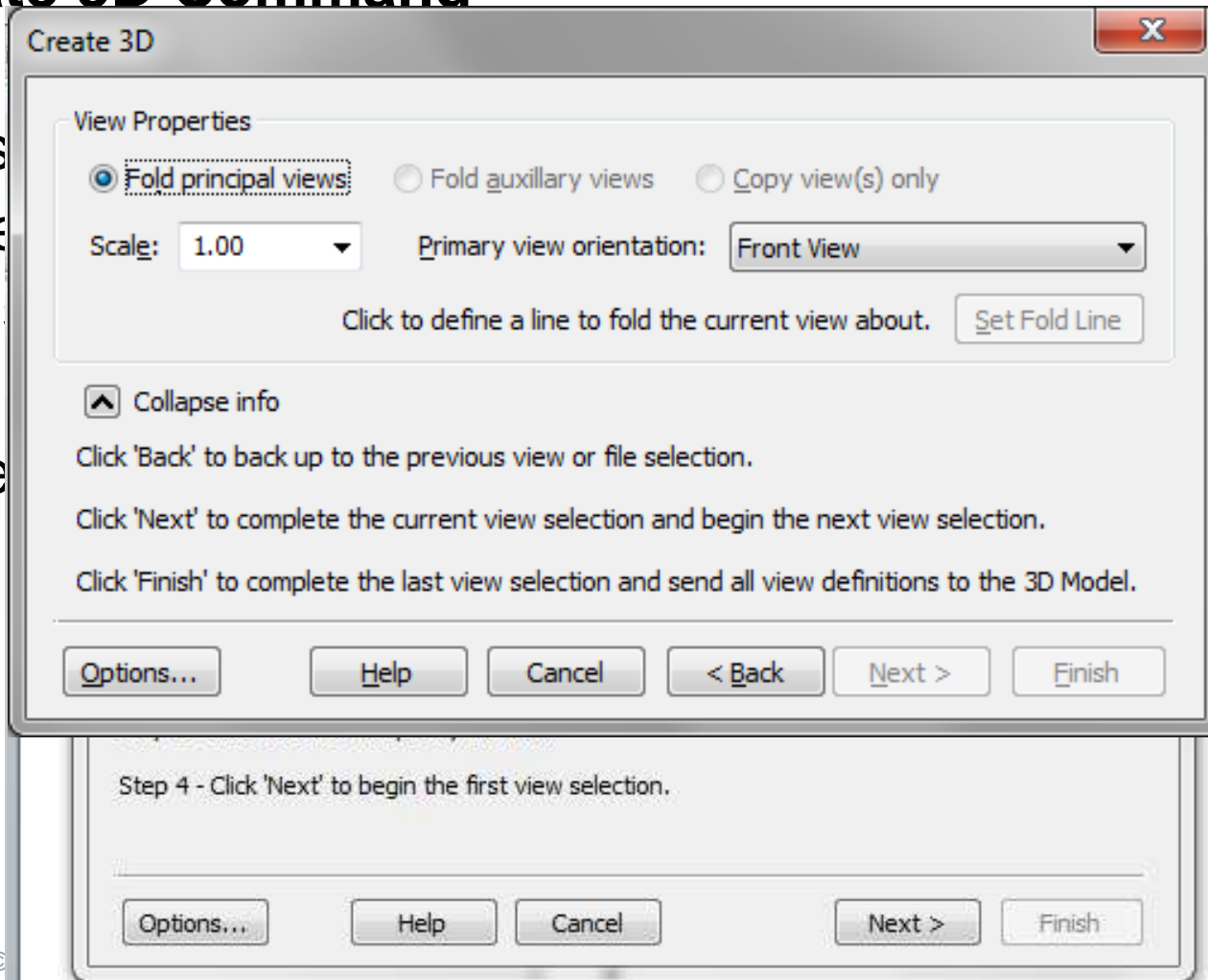
- Can assist with imported geometry
- Can also
- * Apply the Rigid set to



Some Tools for Additional Assistance (2D)

Create 3D Command

- Use
- cre
- as
- Be



raft to
create

Some Tools for Additional Assistance (3D Parts)

Optimize

- Personal experience-Run on every file that has been translated into SE (3D).
- Assists in cleaning up geometry for use.
- Can be run more than once.

Some Tools for Additional Assistance (3D Parts)

Geometry

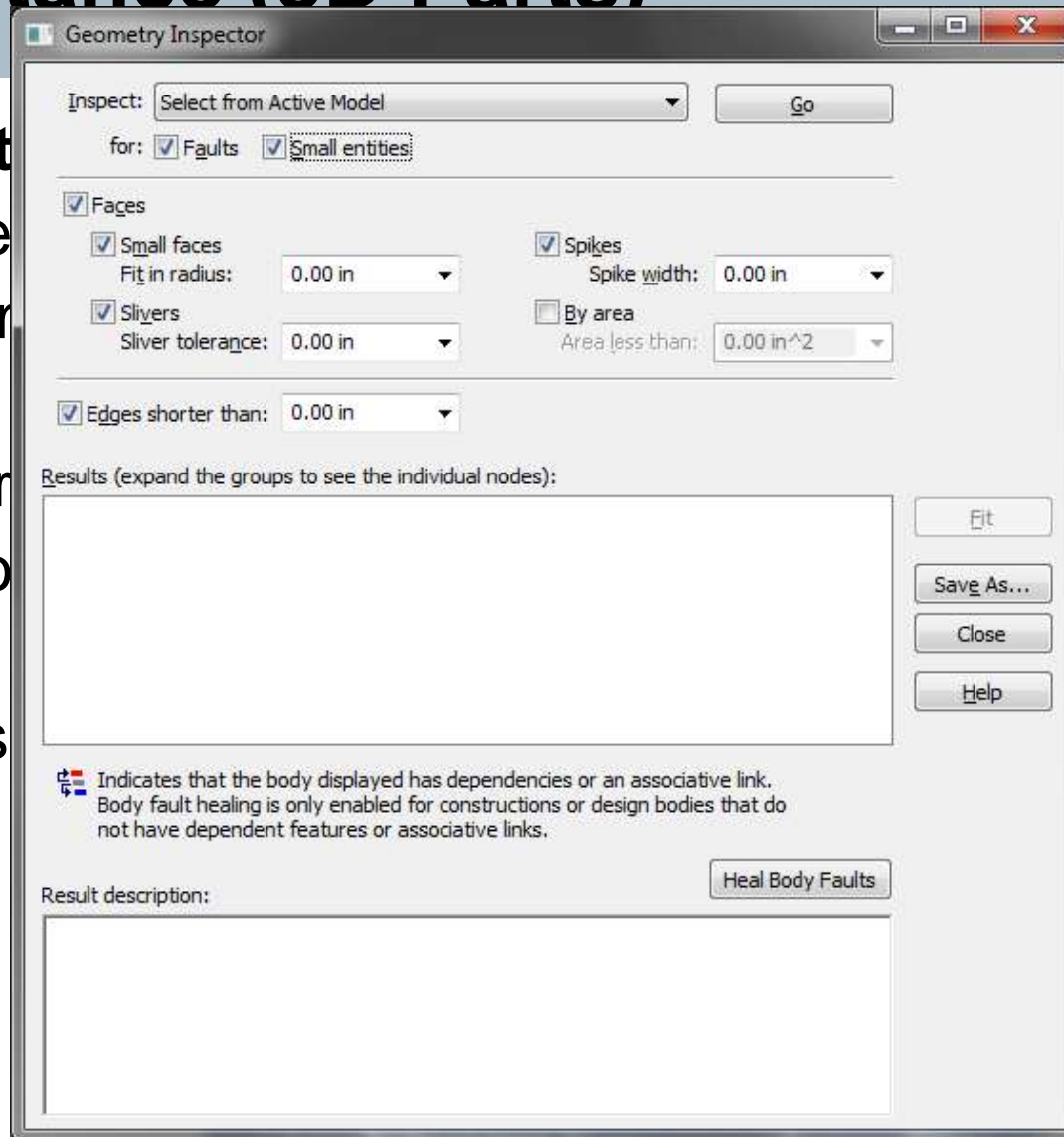
➤ The
geom

➤ It pr
reso

➤ Ass

model

and and



Some Tools for Additional Assistance (3D Parts)

Recognize Holes, Patterns of Holes...

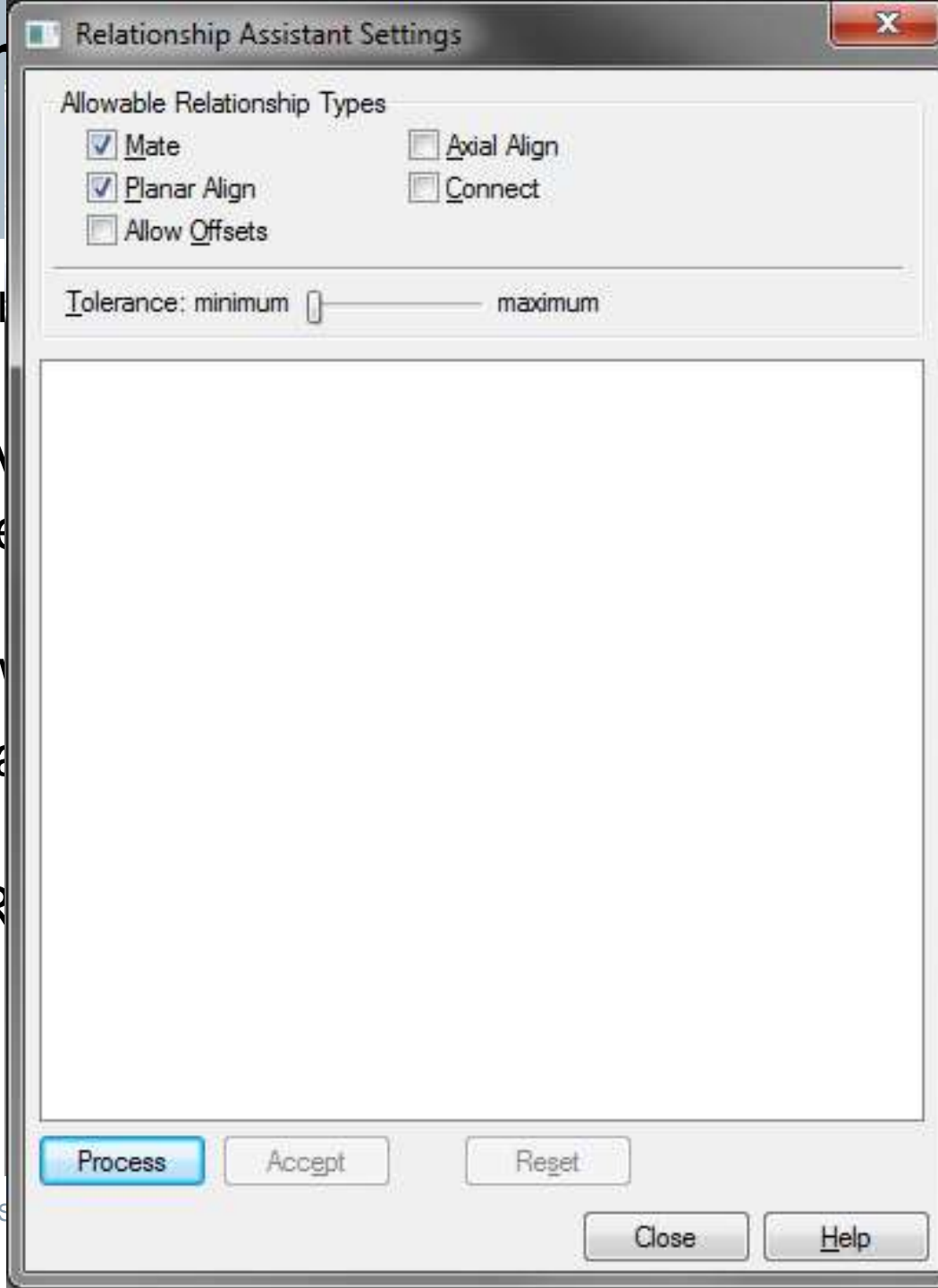
- Find circular cutouts and recognize/use as holes.
- Used to not only modify hole properties but can turn circular cutouts in existing SE models to holes
- Can also be used to delete holes

Some Ass

Asse

- A
- be
- W
- pa
- R

SIEMENS



ps

position of

results.

nd bar.

Some Tools for Additional Assistance (3D Assembly)

Simplify Assembly

- Use to save out a copy of simplified models.
- Recommended to use this approach if no need to see “overly-detailed” models.

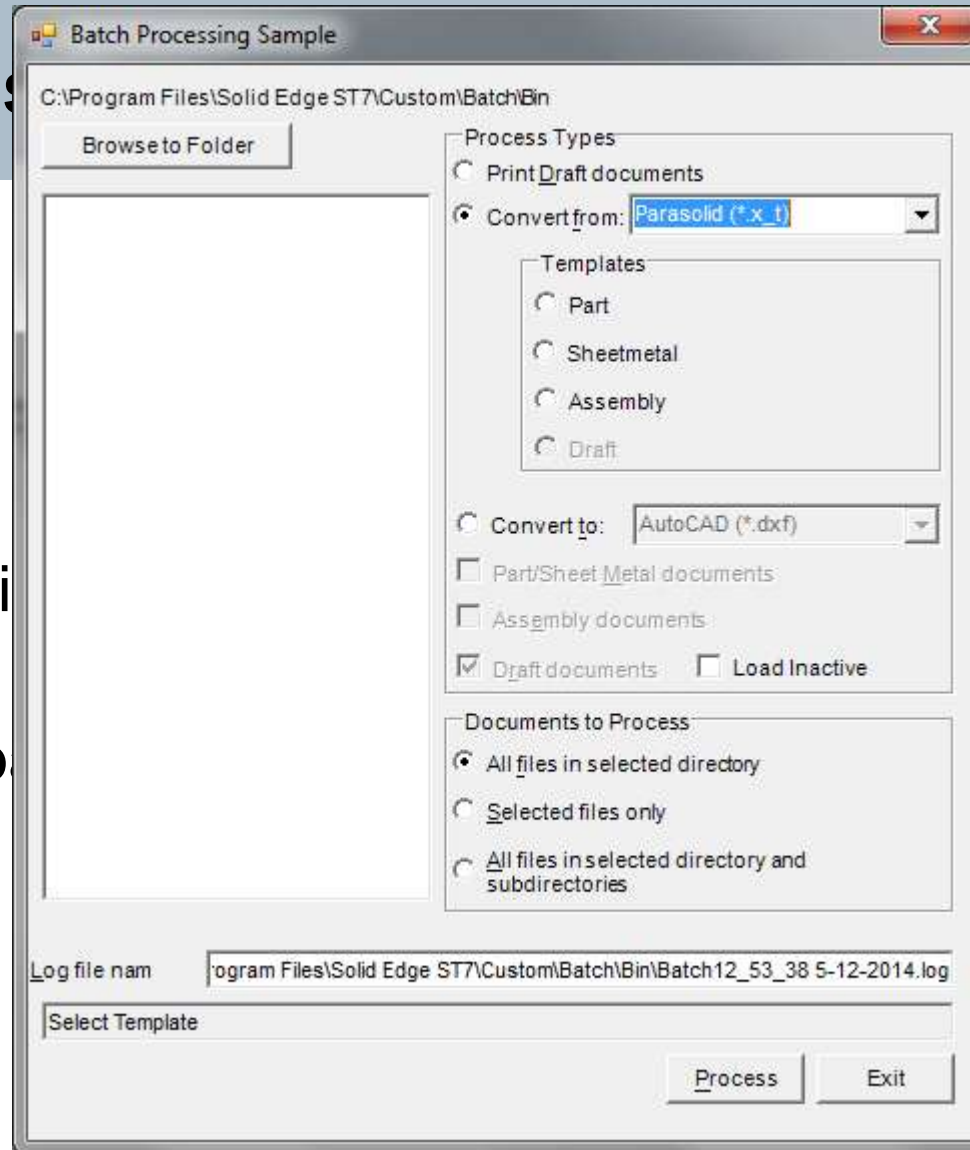
Bulk Tools

Batch.exe

C:\Program

➤ Many options

➤ Options box

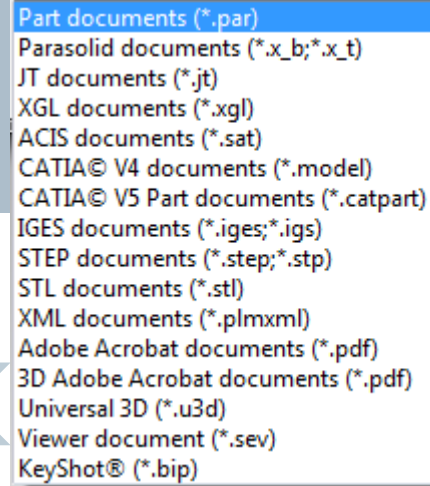


h\Bin

rt as well.

Exporting Files

Again SE has many options.



- Part documents (*.par)
- Parasolid documents (*.x_b;*.x_t)
- JT documents (*.jt)
- XGL documents (*.xgl)
- ACIS documents (*.sat)
- CATIA® V4 documents (*.model)
- CATIA® V5 Part documents (*.catpart)
- IGES documents (*.iges;*.igs)
- STEP documents (*.step;*.stp)
- STL documents (*.stl)
- XML documents (*.plmxml)
- Adobe Acrobat documents (*.pdf)
- 3D Adobe Acrobat documents (*.pdf)
- Universal 3D (*.u3d)
- Viewer document (*.sev)
- KeyShot® (*.bip)

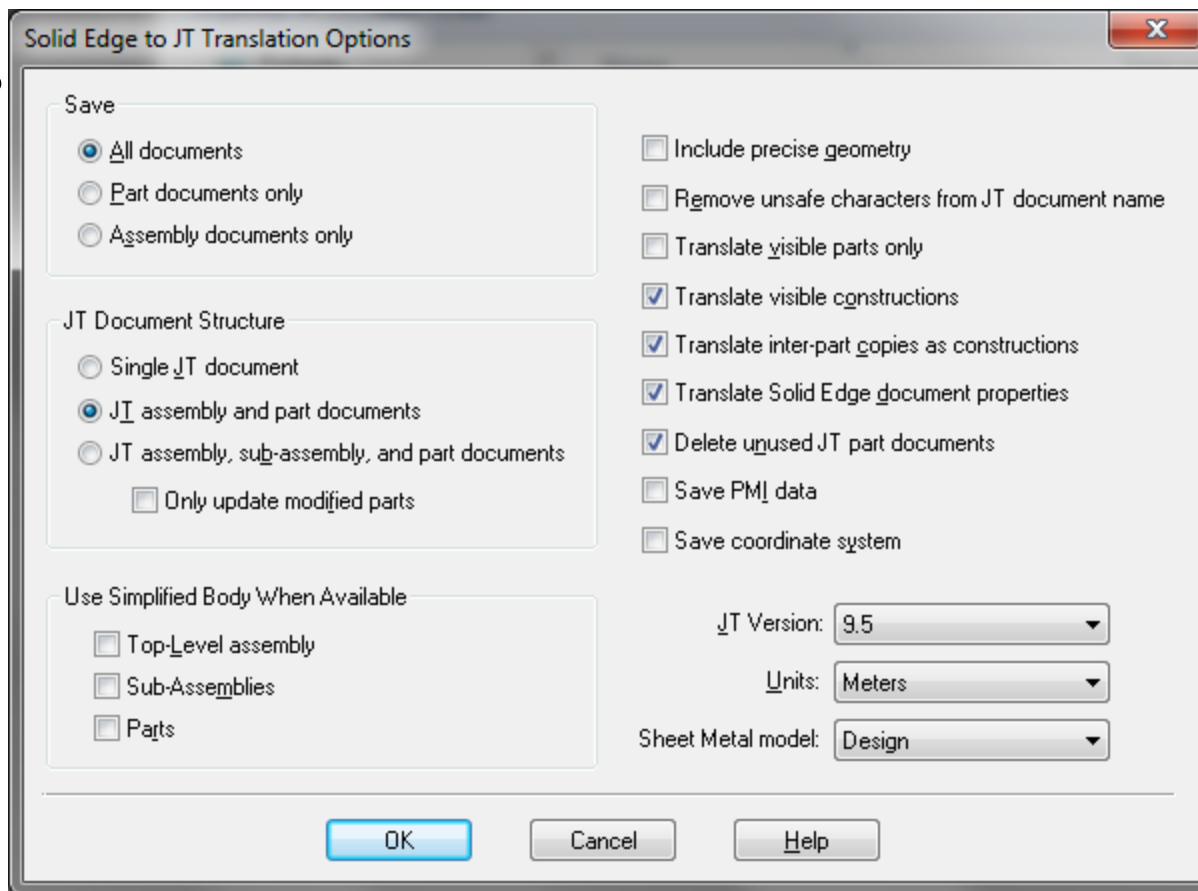
Tips

- Be sure to export to consumer the proper version
- Try to be in direct contact with end user of data
- Be open to suggest alternative solutions such
 - PCF files for reviewing or
 - JT files for review and/or use with precise geometry

Exporting Files

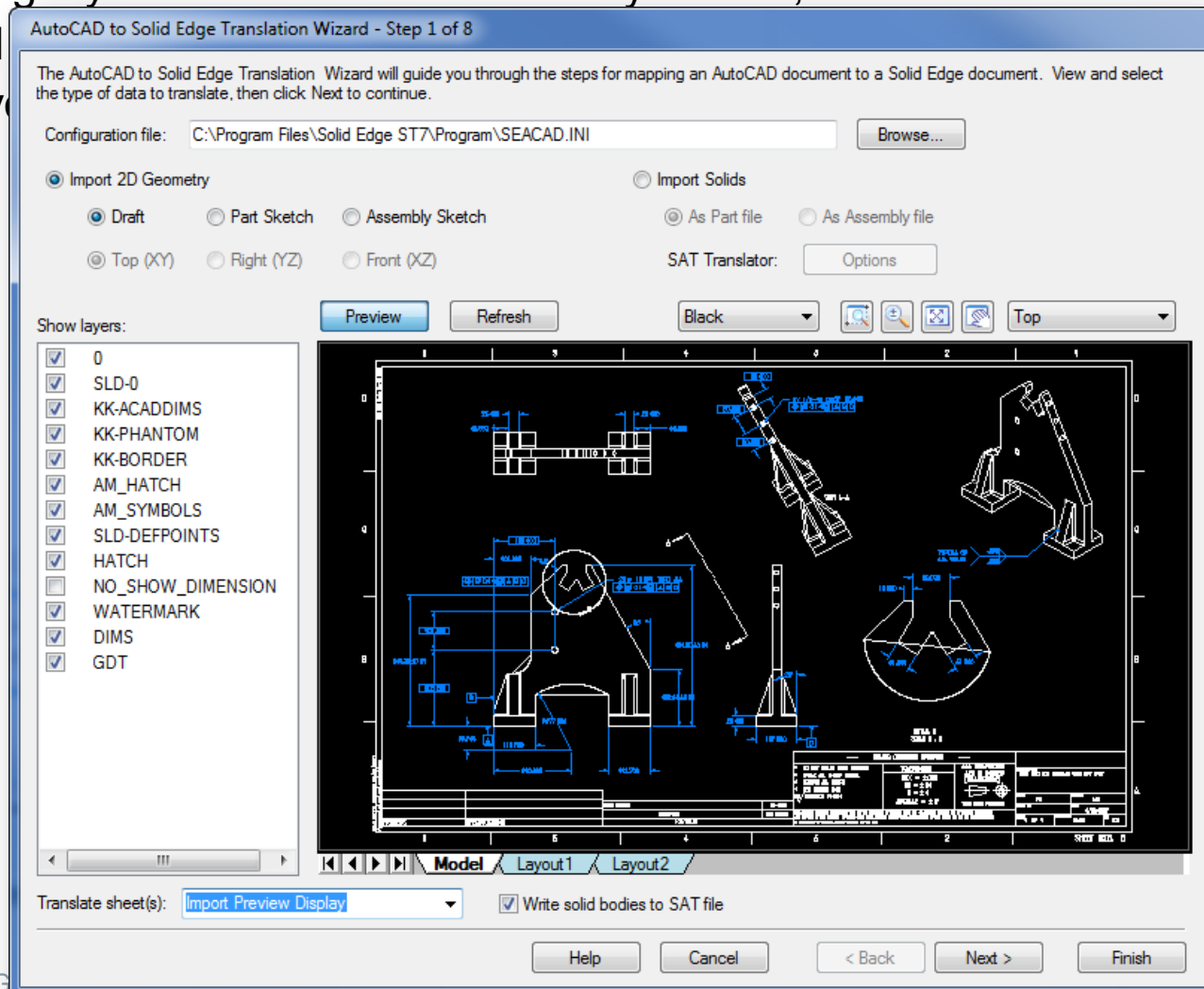
JT Files

Not only



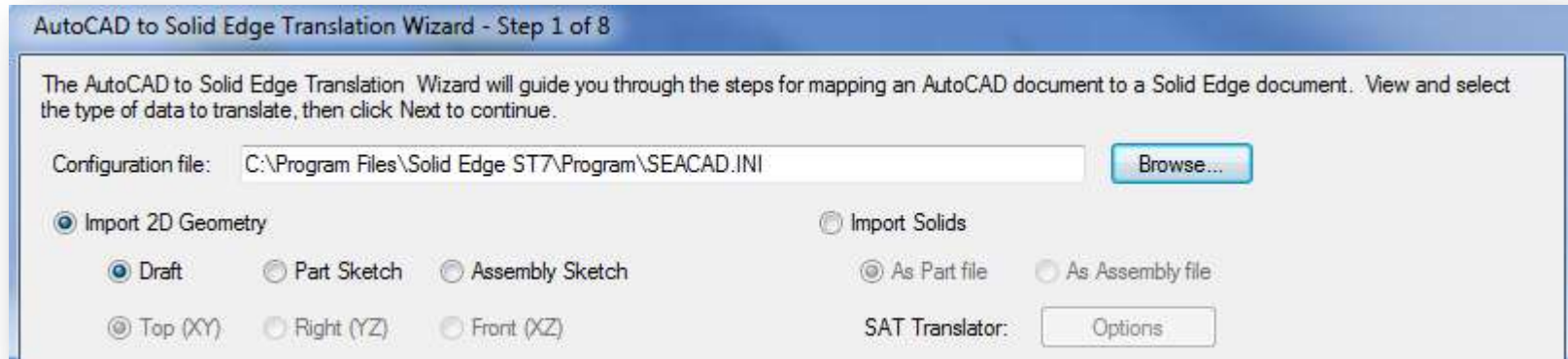
ST7 Enhancements (not a complete list)

- When turning layers on/off in the “Show Layers” list, the Preview will not refresh until
- ST7 gives you a preview window.

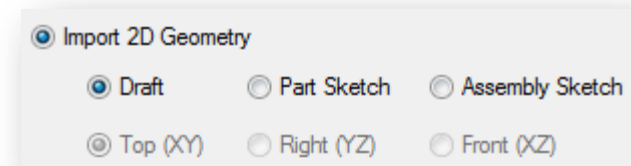


Import DXF/DWG into Part/Assembly

- New options to copy AutoCAD 2D data directly to Part or Assembly sketch.

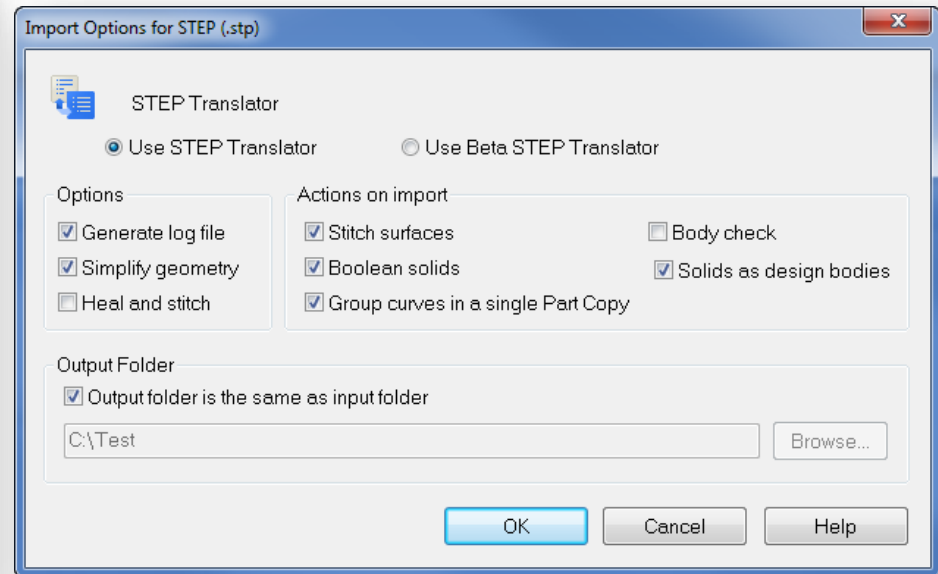
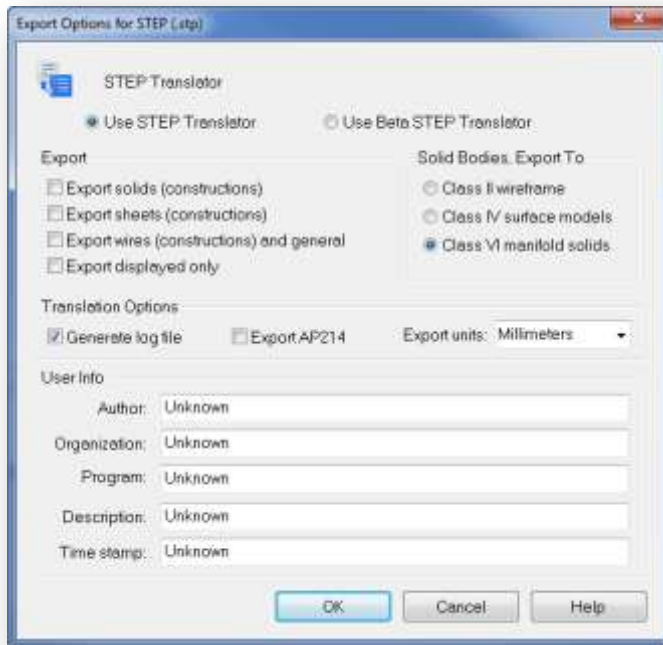


- Import 2D Geometry
 - Options to select target environment (Draft, Part Sketch, Assembly Sketch).
 - If Part Sketch or Assembly Sketch are selected, then added options to select a base plane for sketch placement is provided.
- Options dialog remembers changes on “back”, “next”, and “finish”.



Integrate new Step Translator as BETA

- Solid Edge ST7 will deliver 2 STEP translators



- The existing STEP translator - what we call the Interoperability STEP translator.
- The second is a Beta STEP translator uses a new technology developed by SPLM.

Still in tact??



Thank you for you time!



The logo for Designfusion, featuring the word "design" in a light green font and "fusion" in a dark blue font, with a green arc above the text.

www.designfusion.com

Cory Goulden Application Specialist

Designfusion

305 Milner Avenue

Suite 308

Toronto, Ontario, Canada

Phone: (416) 267-5542

Fax: (416) 267-6553

E-mail: cgoulden@designfusion.com